

# Announcement of selection for Camplus for international university students

University colleges recognized and accredited by the Ministry of Education, University and Research

Academic Year 2025-2026

The purpose of **C.E.U.R.** (European University and Research Centre) Foundation, partner of **Camplus**, is "the cultural training of young university students in the field of University and research, in particular through the establishment and management of university colleges and residences" (Art. 2 of its Statutes).

In Milan, Camplus offers 3 university residences:



## CAMPLUS CITTÀ STUDI

Via A. M. Ampère, no. 3  
20131 - Milan

**95 students hosted**

**Type of accommodation:**  
single or double room.



## CAMPLUS TURRO

Via Stamira d'Ancona, no. 25  
20127 - Milan

**110 students hosted**

**Type of accommodation:** single  
or double room.



## CAMPLUS LAMBRATE

Via Caduti di Marcinelle, no. 2  
20134 - Milan

**180 students hosted**

**Type of accommodation:** single or  
double rooms in shared flats with  
bathroom and kitchen.

## 1. LOCATION

### POINTS OF INTEREST:

- 1 Piola metro station
- 2 Turro metro station
- 3 Lambrate metro station
- 4 Polytechnic University of Milan
- 5 Bicocca University
- 6 Catholic University
- 7 University of Milan
- 8 Bocconi University
- 9 Central Station











## 2. CONTRACT TERM

Campus	Period of contract validity		Closed for Christmas holidays	Closed for Easter holidays
<b>Città Studi</b>	Sep. 1st, 2025	july 25th 2026	From Dec. 23rd, 2025 up to Jan. 6th, 2026	From Apr. 2nd, 2026 up to Apr.6th, 2026
<b>Turro</b>	Sep. 1st, 2025	july 25th 2026	From Dec. 23rd, 2025 up to Jan. 6th, 2026	Always open but residential and educational services are suspended
<b>Lambrate</b>	Sep. 1st, 2025	july 25th 2026	From Dec. 23rd, 2025 up to Jan. 6th, 2026	Always open but residential and educational services are suspended

To receive information about shorter stays, please, contact directly our staff to know more about the effective availability. Students are eligible for receiving *ad hoc* rates to stay at our properties during the closure periods, according to the property availabilities. In the case of reconfirmation, in the month of August, students can leave their own personal belongings free of charge.

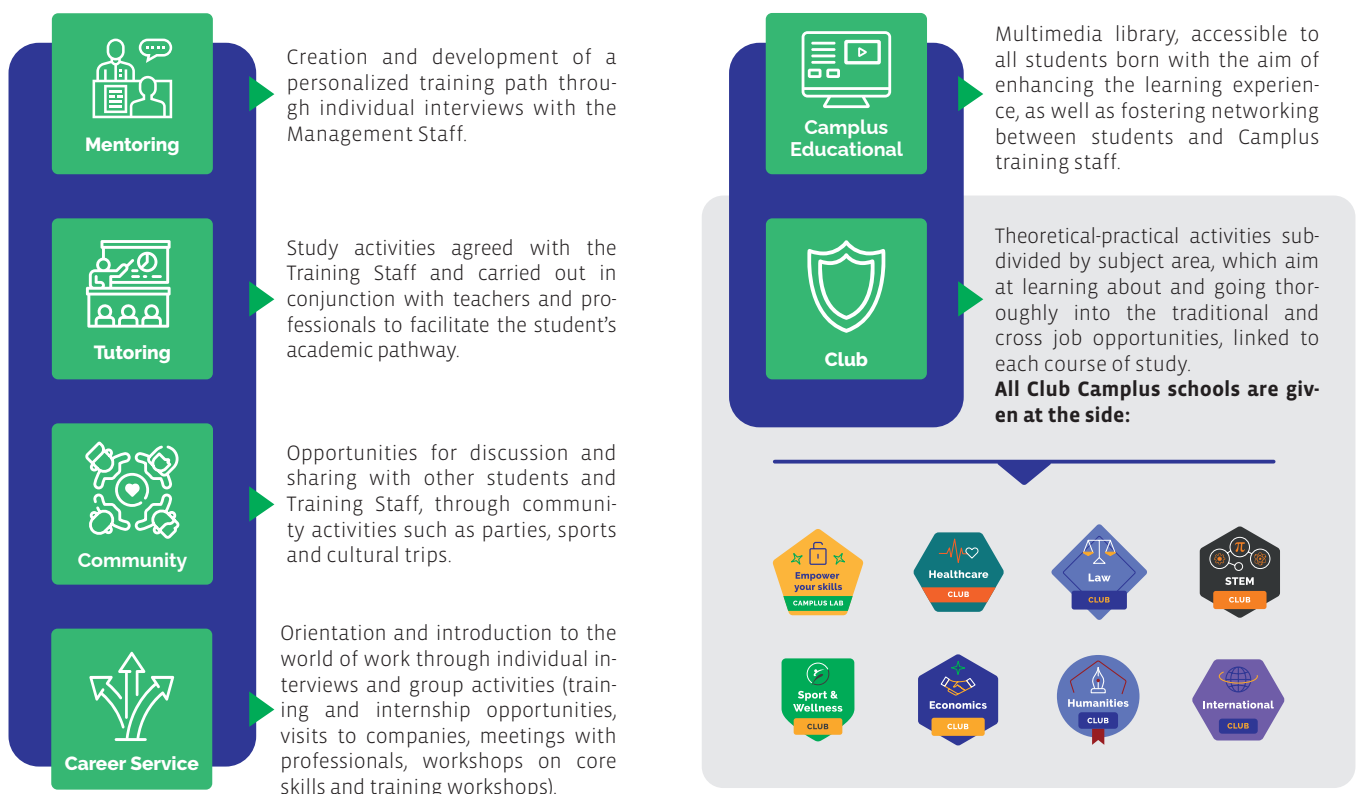
### 3. SPACES AND RESIDENTIAL SERVICES

SPACES		CAMPLUS CITTÀ STUDI	CAMPLUS TURRO	CAMPLUS LAMBRATE
	<b>Accommodation</b> →	in <b>single or double room</b> with bathroom	in <b>single or double room</b> with bathroom	in <b>single or double rooms in shared flat</b> with kitchen and bathroom
	<b>Study rooms</b> →	study rooms   tutor rooms   lab room   conference room	study rooms   tutor rooms   workshop rooms   library   lab room   conference room	study rooms   library   lab room   conference room
	<b>Common areas</b> →	recreation room   five-a-side soccer field   volleyball and basketball court   laboratory room   laundry (extra charge)   parking lots (bikes and motorbikes)	shared kitchen   fitness centre   recreation room   TV room   Plus radio room   laundry (extra charge)   inner courtyard   parking lots (bikes and motorbikes)	fitness centre   recreation room   music room   laundry (extra charge)   parking lots (bikes and motorbikes)

RESIDENTIAL SERVICES		CAMPLUS CITTÀ STUDI	CAMPLUS TURRO	CAMPLUS LAMBRATE
	<b>Customer Service</b> →	Reception <b>H24</b>	Reception <b>H24</b>	Reception <b>H24</b>
	<b>Food service</b> →	<b>Breakfast</b> (except on Sunday) <b>and dinner</b> (except on Saturday) in the period of effectiveness of the contract except on holidays	<b>Breakfast</b> (except on Sunday) <b>and dinner</b> (except on Saturday) in the period of effectiveness of the contract except on holidays	optional choice (see <b>"FEES"</b> pag. 3)
	<b>Cleaning services</b> →	<ul style="list-style-type: none"> <li>• <b>once a week</b> of the rooms and bathrooms</li> <li>• weekly <b>change</b> of bed lining and towels</li> <li>• cleaning of the common areas</li> </ul>	<ul style="list-style-type: none"> <li>• <b>once a week</b> of the rooms and bathrooms</li> <li>• weekly <b>change</b> of bed lining and towels</li> <li>• cleaning of the common areas</li> </ul>	<ul style="list-style-type: none"> <li>• <b>once a week</b> of the rooms and bathrooms</li> <li>• weekly <b>change</b> of bed lining and towels</li> <li>• cleaning of the common areas</li> </ul>
	<b>Utilities</b> →	air conditioning, internet, electricity, water and heating	air conditioning, internet, electricity, water and heating	air conditioning, internet, electricity, water and heating
	<b>Maintenance services</b> →	ordinary and extraordinary	ordinary and extraordinary	ordinary and extraordinary

### 4. EDUCATIONAL SERVICES

The activities are organised by a **training staff** composed by the **College Student Manager** and the **Vice College Student Manager** of the chosen Camplus and three network figures represented by the **Head of College Education**, the **Career Service Specialist** and the **College Operation Manager**.



## 5. FEES

Rates are **per person** and include room rent, residential service, property common spaces usage and educational services during the academic year. The contract is valid **for 11 months**.

### Camplus Città Studi

ROOM TYPE

**Single room**

+

**Double room**

+

RESIDENTIAL SERVICES<sup>1</sup>

Customer service  
 Food service  
 Cleaning services  
 Utilities  
 Maintenance services

SPACES<sup>1</sup>

Study rooms  
 Common areas

EDUCATIONAL SERVICES<sup>1</sup>

Mentoring  
 Tutoring  
 Club  
 Community  
 Career Service  
 Camplus Educational

TOTAL AMOUNT\*

**from € 16.400 to € 17,500**  
per year

**from € 14.000 to € 14,500**  
per year

\*The amount includes room rent, residential and educational services and common spaces usage.

<sup>1</sup>To receive more info about all the services, please, refer to the previous page.

### Camplus Turro

ROOM TYPE

**Single room with shared bathroom**

+

**Double room with private bathroom**

+

RESIDENTIAL SERVICES<sup>1</sup>

Customer service  
 Food service  
 Cleaning services  
 Utilities  
 Maintenance services

SPACES<sup>1</sup>

Study rooms  
 Common areas

EDUCATIONAL SERVICES<sup>1</sup>

Mentoring  
 Tutoring  
 Club  
 Community  
 Career Service  
 Camplus Educational

TOTAL AMOUNT\*

**from € 16.000 to € 16,900**  
per year

**€ 14,000**  
per year

\*The amount includes room rent, residential and educational services and common spaces usage.

<sup>1</sup>To receive more info about all the services, please, refer to the previous page.

### Camplus Lambrate

ROOM TYPE

**Single room in shared flat**

+

**Double room in shared flat**

+

RESIDENTIAL SERVICES<sup>1</sup>

Customer service  
 Food service (optional)  
 Cleaning services  
 Utilities  
 Maintenance services

SPACES<sup>1</sup>

Study rooms  
 Common areas

EDUCATIONAL SERVICES<sup>1</sup>

Mentoring  
 Tutoring  
 Club  
 Community  
 Career Service  
 Camplus Educational

TOTAL AMOUNT\*

**€ 13,000**  
per year

**€ 10,500**  
per year

\*The amount includes room rent, residential and educational services and common spaces usage.

<sup>1</sup>To receive more info about all the services, please, refer to the previous page.

The fees indicated refer to the majority of room types in the property. Possible variations in tuition may depend on the characteristics of the room (exclusive use of the bathroom, size, etc...).

**For Camplus Città Studi and Turro**, the additional and optional cost for lunch is € 2.500,00 per year/person. **For Camplus Lambrate**, the additional and optional cost for breakfast and dinner is 3.300€ per year/person. Full board option (breakfast, lunch and dinner) is available upon request too for Camplus Lambrate and the additional cost is € 5.800,00 per year/person.

Announcement of selection for International Students - Milan | page 3

## 6. ADMISSION REQUIREMENTS

The candidates fulfilling the following requirements may proceed with the admission process:

- students enrolling in any university-level school for the academic year 2025 - 2026;
- students who have not been convicted for any criminal offence and have no ongoing criminal procedures;
- students not suffering from pathologies incompatible with community life.

## 7. APPLICATION

In order to complete the application, students have to fill in the *online form* available on our web site in the admission section at following link: <https://camplus.it/en/book/student-accommodation/>

After filling in the application form online, students shall email the following documents to [milano.college@camplus.it](mailto:milano.college@camplus.it)



**Identity Card  
or Passport**



**Photo**

**Erasmus students** must also send the following documents:

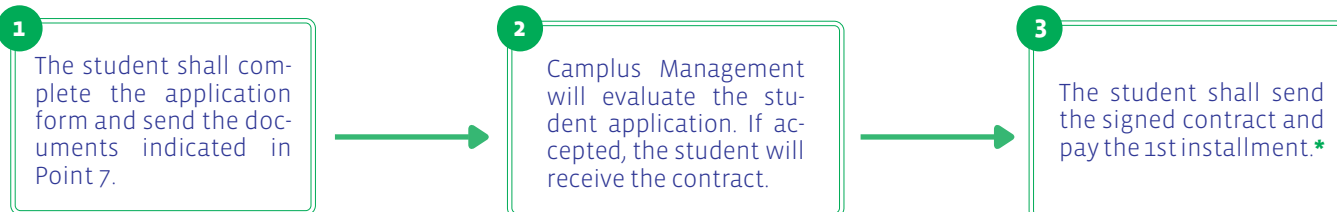


**List  
of University exams taken**



**Acceptance document  
from the Italian university where you will be enrolled**

## 8. ADMISSION PROCEDURES AND PAYMENT TERMS



*\*The deadlines for the payment of the other installments will be fixed in the contract.*

## 9. CONTRACT

The relationship between Camplus and each admitted student will be regulated by a special contract.

Founder & Ceo  
Maurizio Carvelli

**PER INFORMAZIONI**  
[www.camplus.it](http://www.camplus.it)



Fondazione CEUR

**camp**lus

